

Reduce input costs, Improve yield and Save time



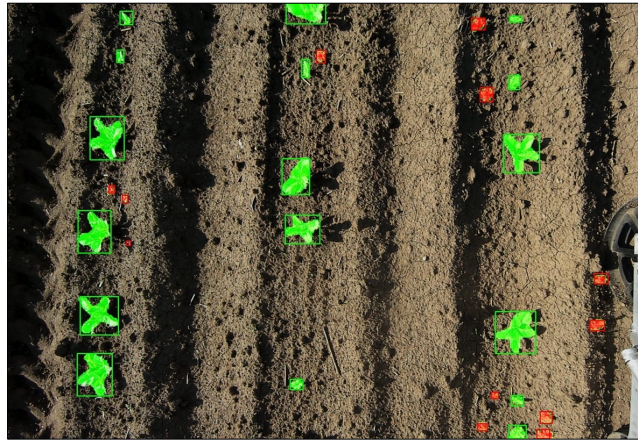
Features	Benefits
<ul style="list-style-type: none"> Centimeter level visual perception 	<ul style="list-style-type: none"> Plant level phenotyping data collection Reduce inputs by up to 90% with Variable Rate Application Early detection & treatment of disease or blights
<ul style="list-style-type: none"> GPS Augmentation 	<ul style="list-style-type: none"> Reduce headland and increase crop yield by 3-5% with tighter end-turns and better row-implement alignment
<ul style="list-style-type: none"> Software defined smart sensor 	<ul style="list-style-type: none"> Single sensor platform able to address a range of tasks Reduces inventory, installation and repair time/costs
<ul style="list-style-type: none"> Industry Standard interfaces GPS, WiFi, LTE, Ethernet & CANBus 	<ul style="list-style-type: none"> Simplified integration for standard perception features Accelerated data collection for custom AI training Enterprise data integration with standard formats & API's
<ul style="list-style-type: none"> Fully integrated, compact design with industrial grade electronics, all-weather sealed enclosure, connectors and cables 	<ul style="list-style-type: none"> Quick installation anywhere on equipment High reliability without additional cooling No specialized cabling, connectors or tools Fast and easy to replace in event of damage
<ul style="list-style-type: none"> Scalability 	<ul style="list-style-type: none"> Standard product for evaluation and development Licensable IP for customization and volume production

Perception Applications

GPS Augmentation



Plant level data and VRT



Crop condition monitoring



Specifications

Perception Latency	30 fps, < 50ms
Field of View	84° ↔ 52° ↕ 105° ↗
Detection Range	1 - 100m (3 - 300ft)
Resolution	4K / 8MP (3840x2160) CMOS Sensor 2 μm x 2 μm pixels for low light sensitivity
AI Processors Integrated Peripherals	i.MX8M Plus (Quad A53 + 2 TOPS NPU), optional 26 TOPS AI Accelerator LTE Modem, GNSS, 9 axis IMU, internal temp & humidity sensors
Environmental	-40°C to +65°C Industrial Temp, passive cooling IP67 rated enclosure
Electrical	RJ45 IP67 waterproof Ethernet with optional POE M12 10 - 27VDC (7W), RS-485/CANbus 2 SMA connectors for external GPS + LTE antennas
Mechanical	110x115x90mm (4 ¼ x 4 ½ x 3 ½ in) 450g (16 oz) Multiple ¼ - 20 mounting points



edgefirst.ai



+1 403 261 9985



info@au-zone.com